

# GL BankBridge

## ADD BANK TRANSACTIONS AUTOMATICALLY WHILE MAKING YOUR GL ENTRIES

GLBankBridge is used during the entry of a transaction to an account that is attached to a checkbook, to provide the user with an option to automatically create the corresponding transaction in the bank reconciliation module.



**Eliminates having to also manually enter the entry in bank reconciliation**



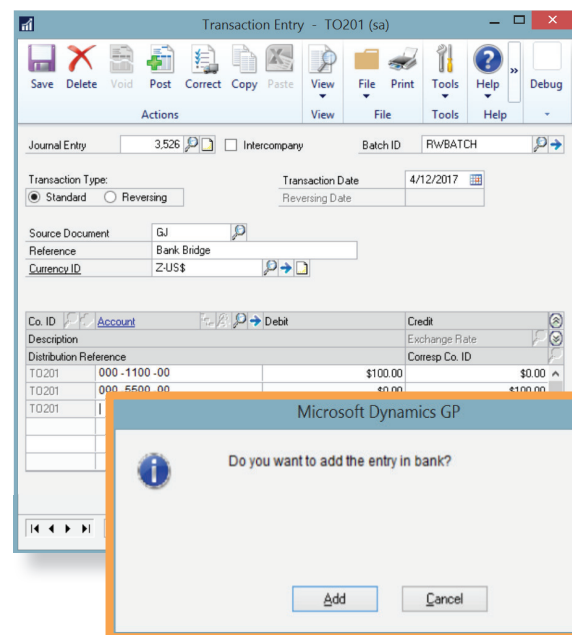
**Uses automation to create efficiencies**



**Ensures accuracy and consistency**



**Saves time and effort**



**wsTOOLS**

**Microsoft Dynamics GP**

